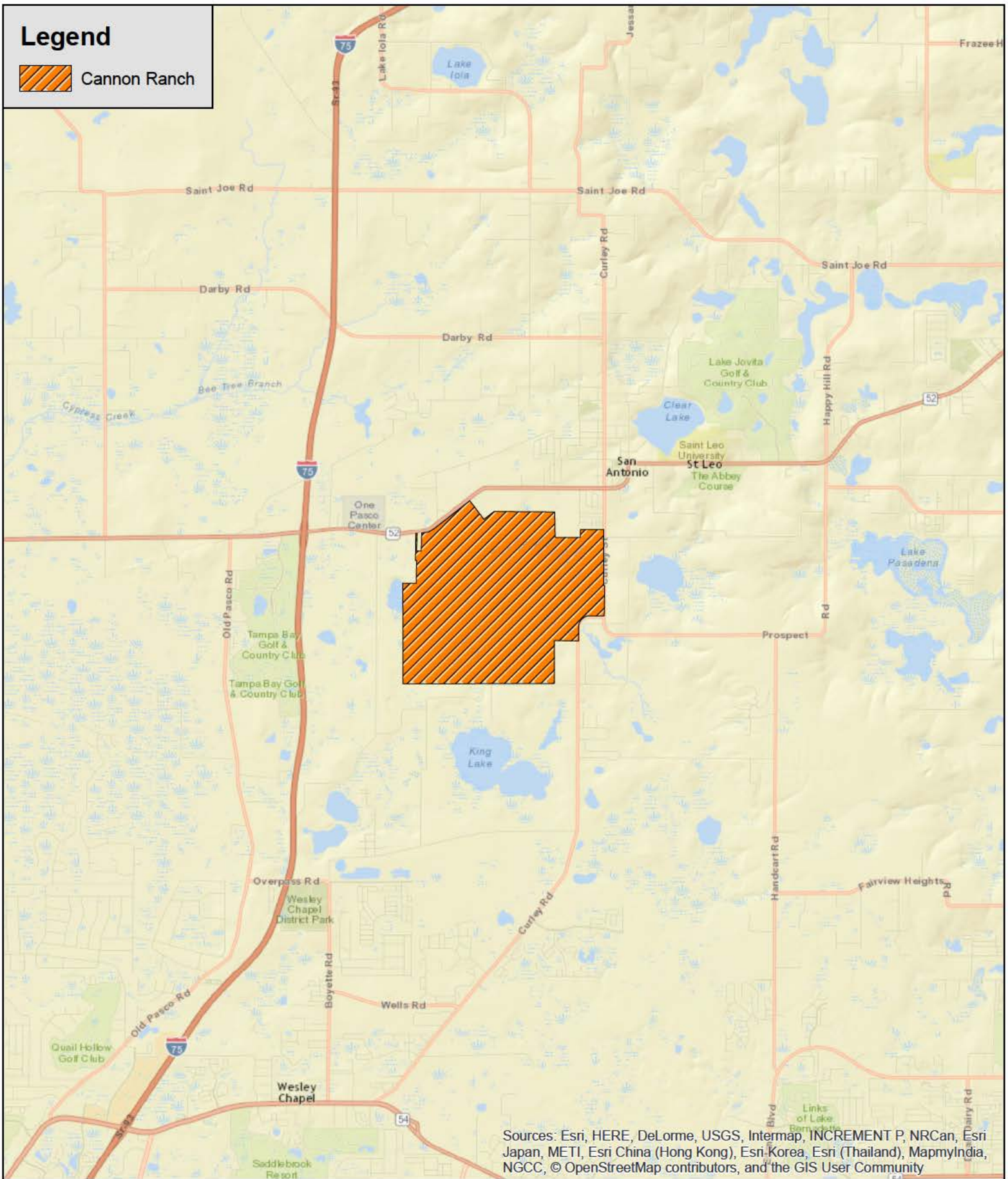


# Legend

 Cannon Ranch

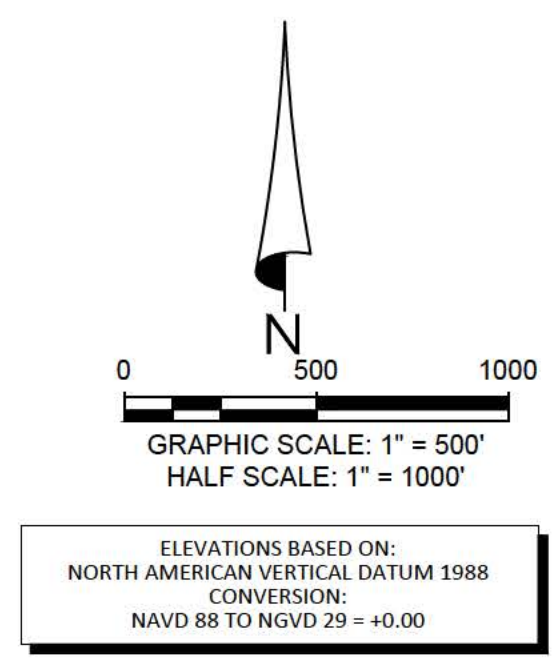
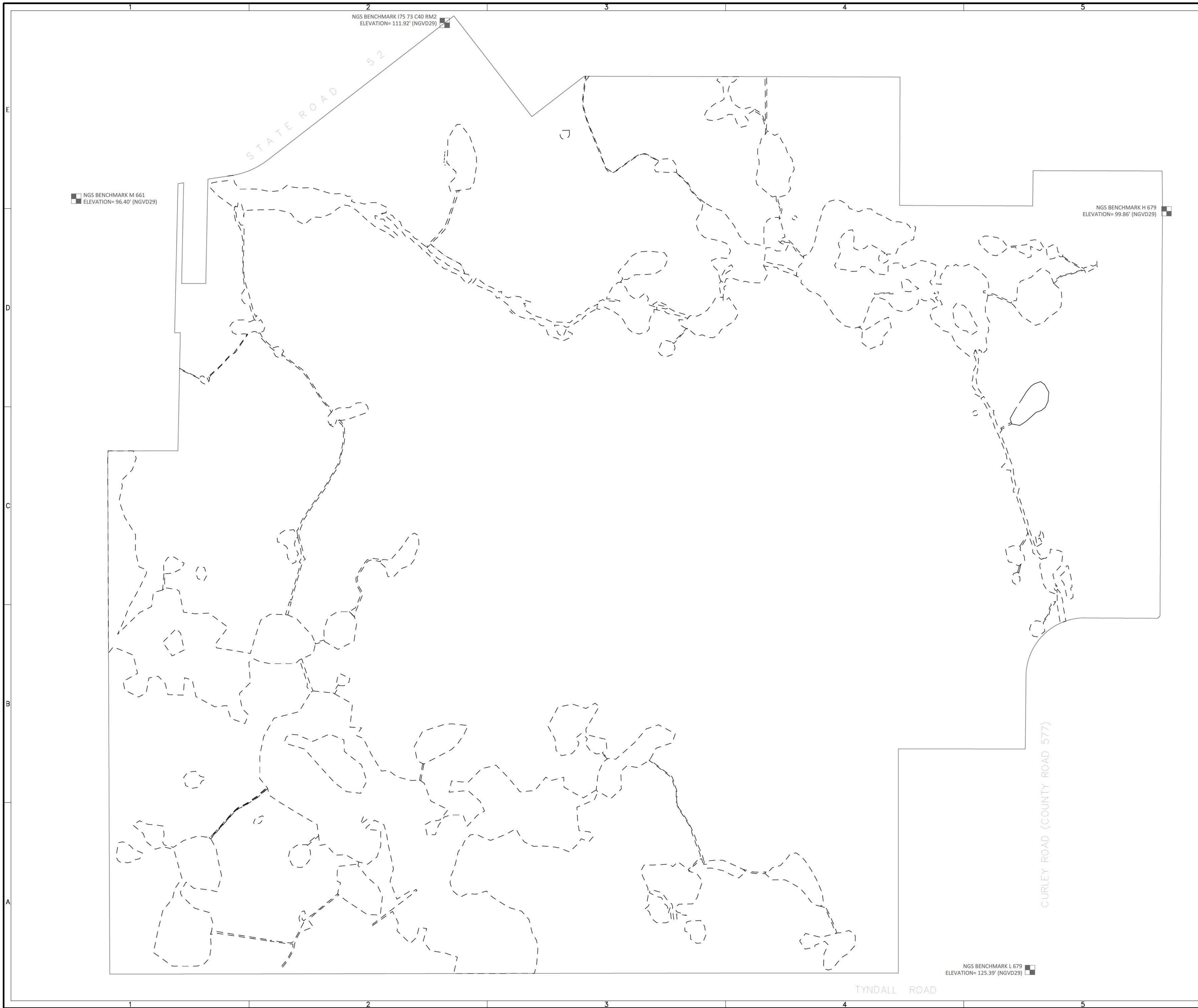


Sources: Esri, HERE, DeLorme, USGS, Intermap, INCREMENT P, NRCan, Esri Japan, METI, Esri China (Hong Kong), Esri Korea, Esri (Thailand), MapmyIndia, NGCC, © OpenStreetMap contributors, and the GIS User Community

Cannon Ranch  
Pasco County, Florida  
Figure 1  
Location Map

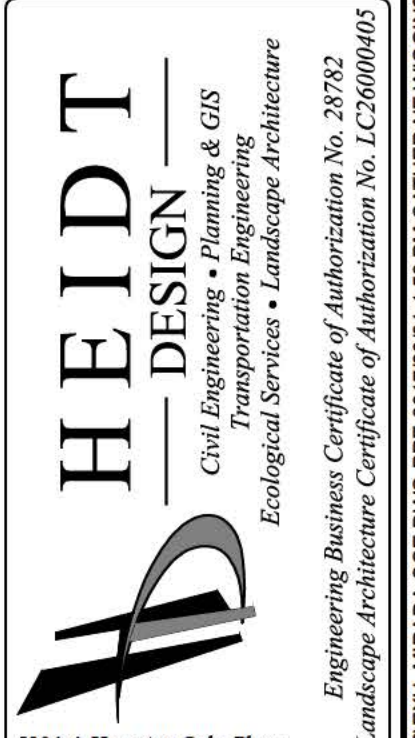


7,000  
□ Feet  
Project #: 890-01  
Produced By: DR  
Date: 2/7/2017



**LEGEND**

--- EXISTING COE WETLAND



Engineering Business Certificate of Authorization No. 28752  
Landscape Architecture Certificate of Authorization No. LC26000405

**MIRADA - COE WETLAND EXHIBIT**

**PRE-DEVELOPMENT COE WETLANDS**

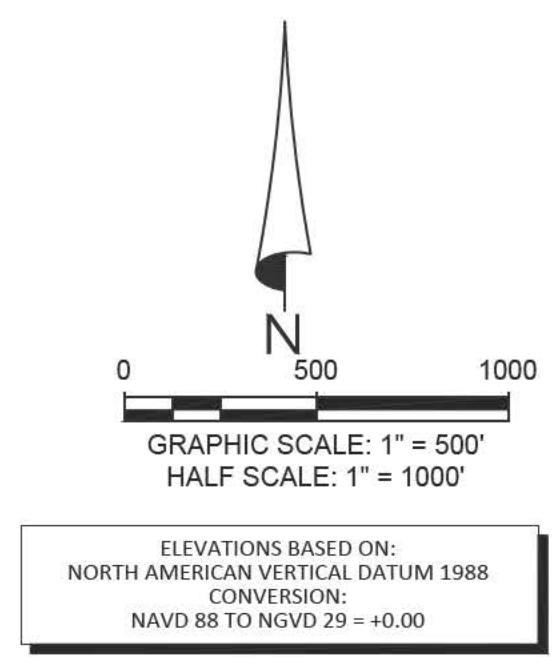
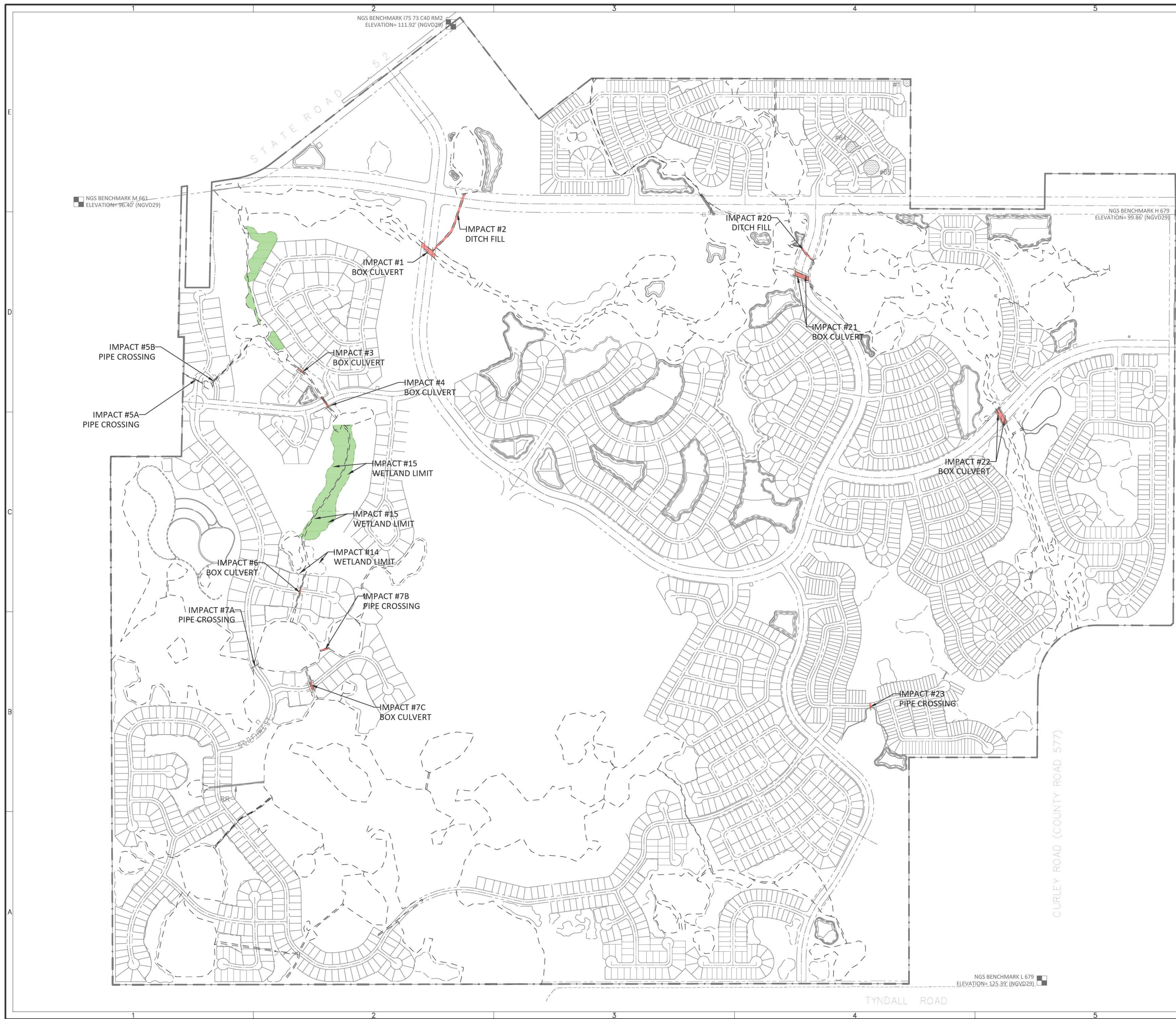
PREPARED FOR: CR PASCO DEVELOPMENT, LLC

NO.	DATE	DESCRIPTION

NO.	DATE	DESCRIPTION
1	03/29/2017	REVIEW SUBMITTAL

PROJECT NO: AAA-AA-0000  
FILE: EXH\_MIRADA COE  
DESIGN BY:  
DRAWN BY: CNW

**EXH-1**



**LEGEND**

	EXISTING COE WETLAND
	PREVIOUSLY APPROVED IMPACTS
	CURRENT EXCAVATION

**HEIDT DESIGN**  
 Civil Engineering • Planning & GIS  
 Transportation Engineering  
 Ecological Services • Landscape Architecture

5904-A Hampton Oaks Pkwy  
 Tampa, Florida 33610  
 Office: 813.233.5311  
 Fax: 813.464.7629  
 www.HeidtDesign.com

Engineering Business Certificate of Authorization No. 28792  
 Landscape Architecture Certificate of Authorization No. LC26000405  
 R:\MIRADACOE\_CROSSINGS\EXH\_1\MIRADA COE DWG-CURRENT 20170303 13 25 PM BOYAN PARSOV

MIRADA - COE WETLAND EXHIBIT

CURRENT EXCAVATION

PREPARED FOR: CR PASCO DEVELOPMENT, LLC

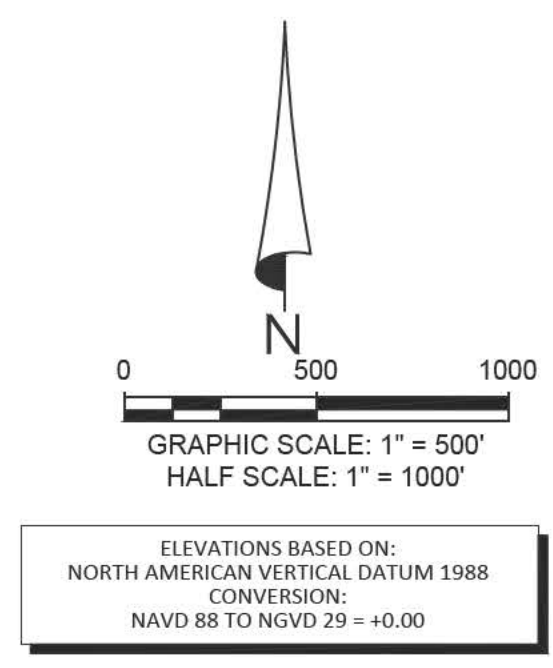
DATE	DESCRIPTION

DATE	DESCRIPTION
03/29/2017	REVIEW SUBMITTAL

PROJECT NO: AAA-AA-0000  
 FILE: EXH\_MIRADA COE  
 DESIGN BY:  
 DRAWN BY: CNW

**EXH-2**

© COPYRIGHT 2017 HEIDT DESIGN, LLC. ALL RIGHTS RESERVED. NO DOCUMENTATION (INCLUDING BUT NOT LIMITED TO DRAWINGS OR EXHIBITS) MAY BE REPRODUCED OR TRANSMITTED IN ANY FORM OR BY ANY MEANS, ELECTRONIC OR MECHANICAL, INCLUDING PHOTOCOPYING, RECORDING, OR BY ANY INFORMATION STORAGE AND RETRIEVAL SYSTEM, WITHOUT THE WRITTEN PERMISSION OF HEIDT DESIGN, LLC. HEIDT DESIGN, LLC HEREBY GRANTS SPECIFICALLY TO GOVERNMENTAL AGENCIES TO REPRODUCE THIS DOCUMENTATION IN COMPLIANCE WITH F.S. CHAPTER 119.



**LEGEND**

	EXISTING COE WETLAND
	PREVIOUSLY APPROVED IMPACTS
	CURRENT EXCAVATION
	FUTURE EXCAVATION

**HEIDT DESIGN**  
 Civil Engineering • Planning & GIS  
 Transportation Engineering  
 Ecological Services • Landscape Architecture

5904-A Hampton Oaks Pkwy  
 Tampa, Florida 33610  
 Office: 813.233.5311  
 Fax: 813.464.7629  
 www.HeidtDesign.com

Engineering Business Certificate of Authorization No. 23752  
 Landscape Architecture Certificate of Authorization No. LC26000405

MIRADA - COE WETLAND EXHIBIT  
 FINAL BUILD-OUT

PREPARED FOR: CR PASCO DEVELOPMENT, LLC

NO.	DATE	DESCRIPTION

NO.	DATE	DESCRIPTION
1	03/29/2017	REVIEW SUBMITTAL

PROJECT NO: AAA-AA-0000  
 FILE: EXH\_MIRADA COE  
 DESIGN BY:  
 DRAWN BY: CNW

**EXH-3**

© COPYRIGHT 2017 HEIDT DESIGN, LLC. ALL RIGHTS RESERVED. NO DOCUMENTATION (INCLUDING BUT NOT LIMITED TO DRAWINGS OR EXHIBITS) MAY BE REPRODUCED OR TRANSMITTED IN ANY FORM OR BY ANY MEANS, ELECTRONIC OR MECHANICAL, INCLUDING PHOTOCOPYING, RECORDING, OR BY ANY INFORMATION STORAGE AND RETRIEVAL SYSTEM, WITHOUT THE WRITTEN PERMISSION OF HEIDT DESIGN, LLC. THIS DOCUMENT IS THE PROPERTY OF HEIDT DESIGN, LLC AND IS TO BE USED ONLY FOR THE PROJECT AND SITE SPECIFICALLY IDENTIFIED IN THE TITLE BLOCK. ANY REUSE OR MODIFICATION OF THIS DOCUMENT IS STRICTLY PROHIBITED. HEIDT DESIGN, LLC IS HEREBY GRANTED SPECIFICALLY TO GOVERNMENTAL AGENCIES TO REPRODUCE THIS DOCUMENTATION IN COMPLIANCE WITH F.S. CHAPTER 119.